



Construction Update

October 2024



Current status on site

Block C Internals

Apartments Level 2-7

Levels 7-2 all plots complete.

All communal spaces are complete, with the lift installations ongoing.

Air tightness testing and Sound Testing of the building are underway, which will allow the production of the EPC's.

Townhouses – GF & Level 1

All kitchens are installed. Internal doors and joinery works are nearing completion. Tiling to plots is nearing completion. Sockets and switches are now installed, along with plumbing installations, which are nearing completion.

Car park / Bin store / Common Areas / Plant room

Plant room installations are nearing completion, with plant room water tanks, booster equipment sets now installed.

Water infrastructure is laid around the building, awaiting the connection, notice to the current block is in place to allow the connection of the mains.

Electrical installations to the building are in progress. The substation switchgear is due to be delivered shortly to allow the mains electric works to the building to commence. All electrical works to the riser cupboards is complete, awaiting power on.

Façade / Externals

All cladding and windows to the South, East and West Elevations are now complete, with the access equipment surrounding the building starting to be stripped. The North Elevation is making good progress with the cladding installations well underway. External works are progressing well, with the road installations ongoing.

Planned works in the next period

Block C

Floors 7-2 are complete.

Continue with lift installations and critical building safety systems.

Townhouses

Continue with all joinery, plumbing and electrical fixes.

Installation of hard flooring to the ground floors, with skirtings being installed.

Installation of the ground floor windows and doors.

Externals

Brickslip cladding to North Elevations to continue to completion.

Continue with water and electrical installations to the building.

Commence the road construction to tarmac level and hard landscaping around the building.

Building Control / Consultants Reports and Tests

Building Control

Building control are visiting site, the last visit was in September to check roof installations and fire stopping, all comments from Building Control are positive and we are working in line with Regs.

Checkmate Home Warranty

Checkmate visited site in September, we are working on a couple of minor details, supply of documentation to allow the building to be signed off from a warranty point of view.

EWS-1 Form & Compliance

Specialist façade inspections have one further visit to undertake when the cladding is completed to sign off the building.

Design Consultants

Architect – Fletcher Rae

- As built information for the building is being produced.
- Coordination of Block D design in preparation for the recommencement of the same.

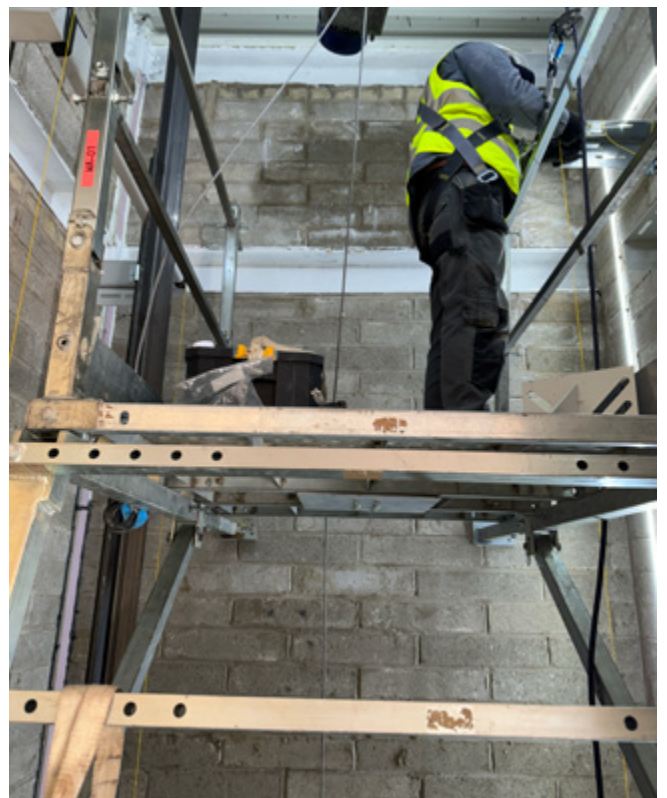
Structural Engineer

- As built information being produced for the block
- Preparation underway for all future blocks with design and building submissions being completed.
- Coordination of Block D design ready for the core and frame installation.

QED Mechanical

- Assisting with final queries over sprinkler safety systems and plant room services.
- Preparation of as built information.
- Coordination of design for Block D ready for recommencement.

On site construction images



On site construction images



On site construction images





www.sourceddevelopmentgroup.com

The information contained with this document is a general guide. This information does not constitute an offer or a contract and we (or anyone in our company) do not imply, make or give any representation, guarantee or warranty whatsoever relating to the terms contained herein. Any intending investor must satisfy themselves as to the correctness of any of the statements, plans or images contained herein. Images are for reference purposes only.