



Construction Update

September 2024



Current status on site

Block C Internals

Apartments Level 2-7

Levels 7-3 all plots are complete.

Floor 2 final decoration and touch ups are being completed.

All communal spaces are complete, with the lift installations underway.

Townhouses Ground to First floor

Kitchen installations are ongoing, along with the internal doors and joinery items being installed. Tiling to plots is underway and sanitary ware and electrical installations are also underway.

Car park / Bin store / Common Areas / Plant room

Plant room installations are in progress, to feed all upper floors with water and electric supplies.

Water infrastructure is now laid around the building, with the main connection being done shortly.

Electrical installations to the building are in progress.

Façade / Externals

All cladding and windows to the South, East and West elevations are now complete. The North elevation is making good progress with the cladding installations well underway. External works are progressing well, with the road installations ongoing.

Planned works in the next period

Block C

Floors 7-2 are complete.

Continue with lift installations and critical building safety systems.

Townhouses

Continue with kitchen installation and all joinery, plumbing and electrical fixings.

Externals

Brickslip cladding to North elevations to continue to completion.

Strip mast climbers to three sides of the building to allow externals to be completed.

Continue with water and electrical installations to the building.

Building Control / Consultants Reports and Tests

Building Control

Building control are visiting site, the last visit was in August, with all works noted to be in accordance with Regulations.

Checkmate Home Warranty

Checkmate visited site in August, with all works noted to be of high standard and all documentation in place.

EWS-1 Form & Compliance

Specialist façade inspections visited site in August and verified all works to the façade to be compliant with EWS-1 requirements.

Design Consultants

Architect – Fletcher Rae

- As built information for the building is being produced.
- Coordination of Block D design in preparation for the recommencement of the same.

Structural Engineer

- As built information being produced for the block
- Preparation underway for all future blocks with design and building submissions being completed.
- Coordination of Block D design ready for the core and frame installation.

QED Mechanical

- Assisting with final queries over sprinkler safety systems and plant room services.
- Preparation of as built information.
- Coordination of design for Block D ready for recommencement.

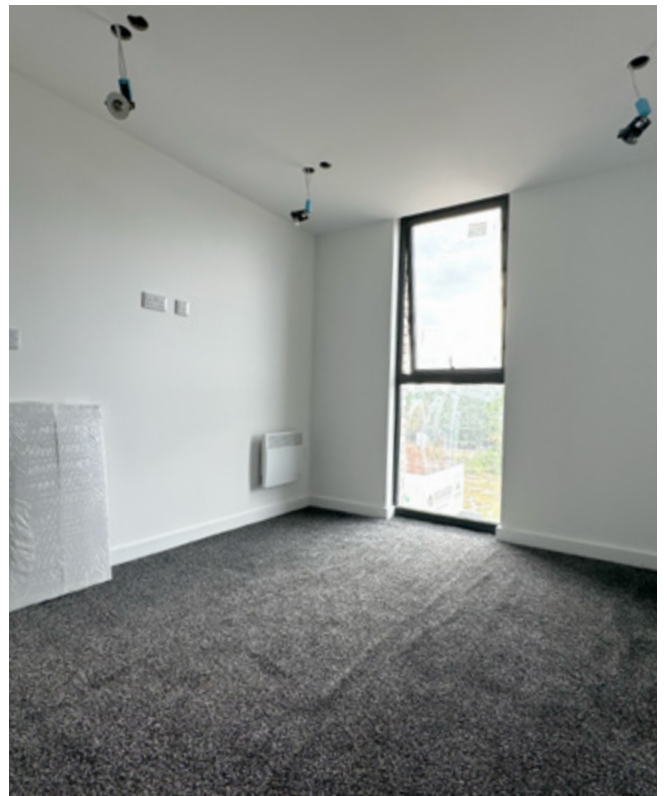
On site construction images



On site construction images



On site construction images



On site construction images - Townhouses





www.sourceddevelopmentgroup.com

The information contained with this document is a general guide. This information does not constitute an offer or a contract and we (or anyone in our company) do not imply, make or give any representation, guarantee or warranty whatsoever relating to the terms contained herein. Any intending investor must satisfy themselves as to the correctness of any of the statements, plans or images contained herein. Images are for reference purposes only.