



# Construction Update

August 2024



# Current status on site

---

## **Block C Internals**

### **Apartments Level 2-7**

Levels 7, 6 & 5 all plots are complete.

Floor 4-3 apartment entrance doors are being fitted and final decoration touch ups are being completed.

Level 2 final decoration is being undertaken and appliances for the kitchens are due shortly.

All communal spaces are nearing completion, with final decoration and electrical fittings underway.

The lifts are due on site at the end of August 24 to commence install.

### **Townhouses Ground to First floor**

All apartments are boarded and are in the process of wall finishes. Kitchens are in the process of being installed and electrical and plumbing installations will commence shortly.

## **Car park / Bin store / Common Areas / Plant room**

Plant room areas are now ready for fit out, with water booster tanks and sprinkler installations.

Water infrastructure is being laid to the development to bring water into the building ready for testing and commissioning.

Electric to the building is due shortly.

## **Façade / Externals**

All cladding and windows to the South, East and West elevations are now complete, the heads and sills to the windows have been fitted, the windows have been cleaned and the mast climber will begin to be stripped shortly. External road works have commenced and the road is anticipated to be to tarmac level in around 3 weeks. Once mast climbers have been stripped the planters and hard landscaping will be installed.

# Planned works in the next period

---

## **Block C**

Floors 5-7 - Complete

Floors 2-4 - Final decoration touch ups and snagging of all areas.

## **Townhouses**

Install appliances and remaining kitchens. Continue with second fix plumbing and electrical fittings. Tiled finish to plots.

## **Externals**

Brickslip cladding to North Elevations to be sufficiently progressed from floor 7-2

Install parapet cappings

Strip mast climber access equipment

Preparation for external hardstanding areas will be underway shortly.

Power on expected by mid September 24 to allow testing and commissioning of the building

# Building Control / Consultants Reports and Tests

---

## **Building Control**

Building control are visiting site, the last visit was in July, with all works noted to be in accordance with Regulations.

## **Checkmate Home Warranty**

Checkmate visited site in July, with all works noted to be of high standard and all documentation in place.

## **EWS-1 Form & Compliance**

Specialist façade inspections visited site in July and verified all works to the façade to be compliant with EWS-1 requirements.

# Design Consultants

---

## **Architect – Fletcher Rae**

- Works are underway to prepare the as built information for the building
- Final queries for the power connection and fire safety to the building are being addressed
- Coordination of Block D design in preparation for the commencement of the same.

## **Structural Engineer**

- As built information being produced for the block
- Preparation underway for all future blocks with design and building submissions being completed.
- Coordination of Block D design ready for the core and frame installation.

## **QED Mechanical**

- Assisting with final queries over sprinkler safety systems and plant room services.
- Preparation of as built information.
- Coordination of design for Block D ready for commencement.

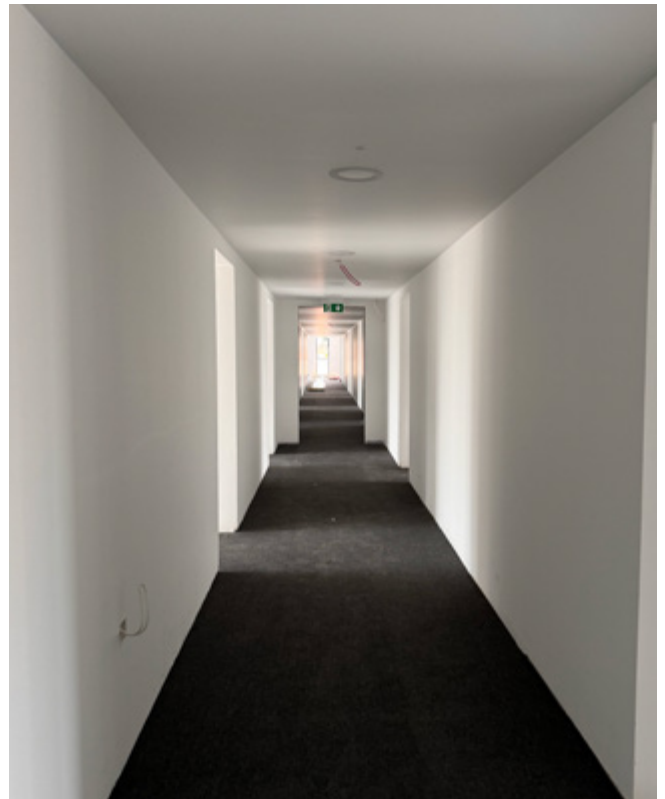
# On site construction images

---



# On site construction images

---



# On site construction images

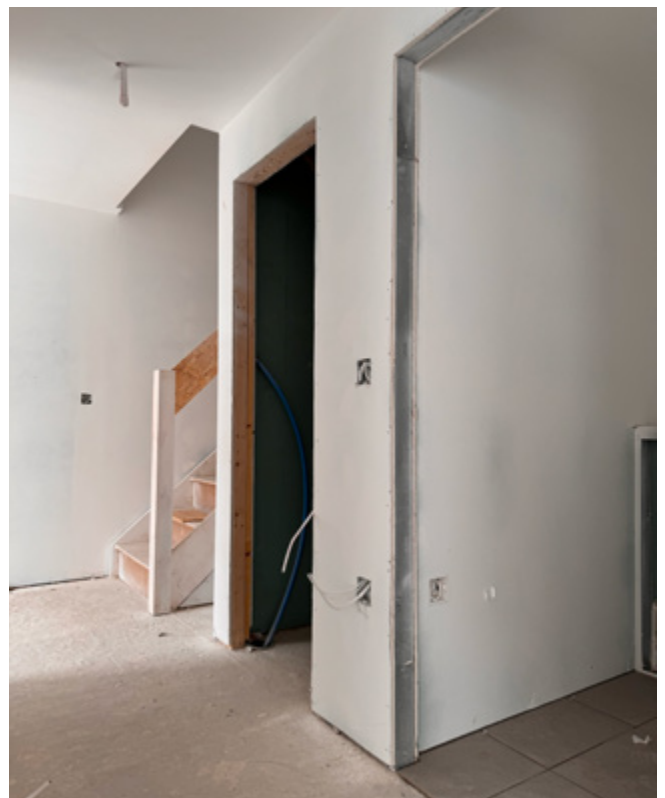
---





# On site construction images - Townhouses

---





[www.sourceddevelopmentgroup.com](http://www.sourceddevelopmentgroup.com)

The information contained with this document is a general guide. This information does not constitute an offer or a contract and we (or anyone in our company) do not imply, make or give any representation, guarantee or warranty whatsoever relating to the terms contained herein. Any intending investor must satisfy themselves as to the correctness of any of the statements, plans or images contained herein. Images are for reference purposes only.